

evie

www.evie.kr

Instagram

Facebook

Email

Tel

@stayve_bbglow | @stayve_fakereport

@stayvekorea | @Stayvebbglow.kr

evie2020@naver.com | eunsuk6104@gmail.com

Emily : 82-10-2741-0182 | Ezra : 82-10-3866-7850

Eirlys : 82-10-4540-6697 | Hyunseo : 82-10-4187-6697

evie CATALOG

Korean cosmeceutical
Ampoule Brand



“Beautiful life with EVIE”

Fulfilling a beautiful lifestyle for you.
Non-artificial and healthy beauty.
EVIE leads the global skincare trend.

”

COMPANY TIME LINE

- 2006
Company founded in South Korea
- 2016
Began exporting to China
Exports to Southeast Asia
Exports to Russia
Exports to Europe
Exports to the Middle East
Exports to North America
- 2017
Exports to South America
- Current Exports to worldwide

One and only color for you
out of all the colors.





Chapter 1. MTS (Microneedling Therapy System)

- 1-1. BB & Booster Ampoule
- 1-2. Pre & Post product
- 1-3. Cherips

Chapter 2. Permanent Pigment

- 2-1. Stayve Organic Pigment
- 2-2. Color Chart

Chapter 3. Peeling

- 3-1. Stayve Seanergy Peel



Chapter 1. Eyelash Perm

- 1-1. Medisco All About Lash

Chapter 2. Facial Treat

- 2-1. Medisco TokTok' Pack
- 2-2. Medisco Peelieve All-In-One Cream
- 2-3. Medisco Peelieve All-In-One Gua Sha
- 2-4. Medisco Peelieve Cica Cream



Chapter 1. Machinery

- 1-1. MISSMITO
- 1-2. Needle

STAYVE

CHAPTER 1

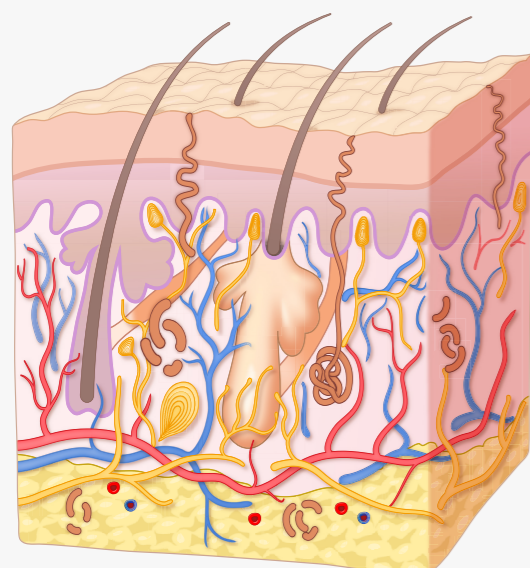


MTS

1-1. BB & Booster Ampoule

1-2. Pre & Post Treatment

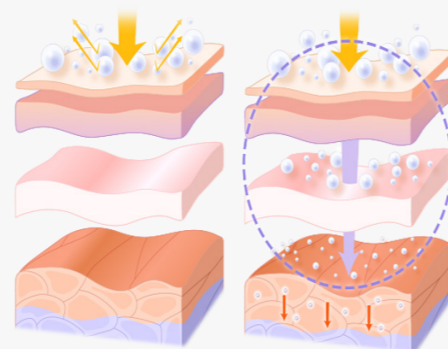
1-3. Cherips



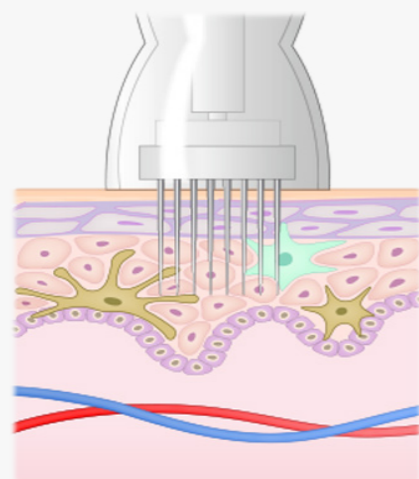
WHAT IS MTS?

MTS is a treatment system that stimulates fibroblasts and generates collagen by using nano-needles to prick small holes on the skin. This creates an environment that facilitates the penetration of cosmetic products and dermatology drugs with large molecules that do not polarize easily.

Cosmetic products do not absorb into the skin and only remain on the layer of dead skin cells when applied with the hands. Only 0.03%-2% of the product is absorbed into the skin, and the rest remains on the outermost layer until it gets washed away. MTS involves the use of needles to increase product absorption. This helps to deliver the active ingredients deeper into the epidermis.



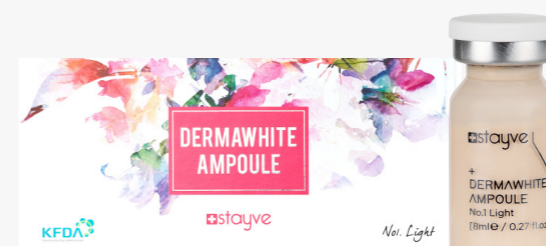
Ampoules that do not contain BB components such as booster ampoules can be used with needles that are 0.2mm-1.0mm in length. Only nano-needles or plastic needles should be used with BB Glow ampoules. Long needles should be avoided because of the minuscule amount of BB coloring agent present in BB Glow. Only KFDA approved safe raw material goes into the making of the titanium dioxide presented in Stayve BB Glow. The same kind of titanium dioxide can be found in BB cream, foundation, toothpaste, chewing gum, etc.



Precaution

Pigments or tattoo inks contain high amounts of coloring and these are not considered as cosmetics; tattoo inks have more than 20% of coloring. These products should never be used for BB Glow treatment.

1-1. BB & Booster Ampoule STAYVE BB Glow Ampoule



No.1 Light

8ml *12pcs/box

Colors used for the brightest skin tones. Ideal shade for people with extra light skin tones.



No.1-2 Light Rose

8ml *10pcs/box

Colors used for light skin with pink undertones. Ideal shade for people with light tone but with pink undertones.



No.2 Medium

8ml *10pcs/box

Colors used for medium skin tones. Ideal shade for people with medium skin tones. The most popular color among the BB line.



No.3 Deep

8ml *10pcs/box

Colors used for brown or bronze-tanned skin tones. Ideal shade for people with tanned skin or bronze skin tones.



No.3-2 Deep Plus

8ml *10pcs/box

Colors used for the darker skin tones. Ideal shade for people with deep skin tones.

1-1. BB & Booster Ampoule

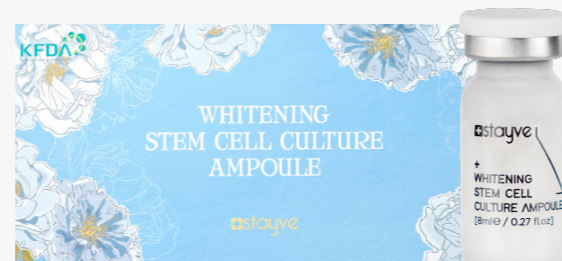
STAYVE Booster Ampoule



01. Stayve Whitening Stem Cell Culture Ampoule

8ml*10 pcs / box

The Whitening Stem Cell Culture Ampoule contains various plant stem cell cultures that improve skin elasticity and reducing wrinkles. It also contains Niacinamide which is certified by KFDA that brightens the skin and makes dull skin clear and healthy.



02. Stayve Aqua Stem Cell Culture Ampoule

8ml*10 pcs / box

The Aqua Stem Cell Culture Ampoule contains various plant extracts that moisturize dry skin. In addition to fortifying the skin's moisture barrier, hyaluronic acid provides moisture deep into the skin, acting as both moisturizer and humectant.



03. Stayve Peptide Gold Ampoule

8ml*10 pcs / box

The Peptide Gold Ampoule contains 99.9% pure gold and 10 different peptides such as niacinamide and adenosine. Niacinamide helps to brighten the skin tone and Adenosine helps for anti-aging such as preventing wrinkles.



04. Stayve Salmon DNA Gold Ampoule

8ml*10 pcs / box

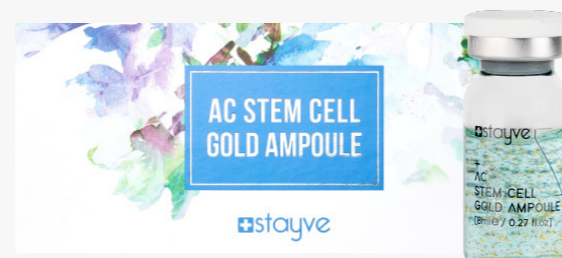
The Salmon DNA Gold Ampoule contains peptides and PDRN extracted from salmon's seminal glands. Peptides are effective for anti-wrinkle and strengthen the skin barrier while PDRN encourages rapid skin regeneration. Niacinamide and 99.9% pure gold powder brighten and clear the skin.



05. Stayve AC Stem Cell Gold Ampoule

8ml*10 pcs / box

The AC Stem Cell Gold Ampoule is ideal for acne-prone skin. It contains Asiatic pennywort extract that is an ingredient proven to fight acne and infections. It also contains 99.9% pure gold powder and acetyl hexapeptide-8 to help anti-wrinkle.



06. Stayve Hyaluronic Acid Ampoule

8ml*10 pcs / box

Hyaluronic Acid Ampoule contains Sodium Hyaluronate as the main ingredient to fill the skin tissues with moisture thoroughly and helps to improve moisturizing power. It also contains other ingredients such as Acetyl Hexapeptide-8 and Palmitoyl Tripeptide-1 which strengthens skin firmness and reduces wrinkles as well.



07. Stayve Microbiome Ampoule

8ml*10 pcs / box

Microbiome Ampoule contains Bifida Ferment Lysate as the main ingredient which improves skin's immunity and reduces the hypersensitive reactions of the skin. It also contains other ingredients such as Lactobacillus / Soybean Ferment Extract that has excellent moisturizing power and Vaccinium Vitis-Idaea Fruit Extract to whiten and give vitality to the skin.



08. Stayve Citron & Calendula Ampoule

8ml*10 pcs / box

Citron & Calendula Ampoule contains Calendula Officinalis Flower as the main ingredient which is well known as Queen of skin calming. It helps to calm and soothe sensitive skin such as dry or chapped skin, and also ideal for troubled skin as it helps Inhibition of inflammation and strengthening skin tissue to heal wounds. It also contains other ingredients such as Citrus Limon Peel Oil that is ideal for oily and troubled skin by cleaning the skin.



09. Stayve Idebenone Ampoule

8ml*10 pcs / box

Idebenone Ampoule contains Hydroxydecyl Ubiquinone as the main ingredient which is also known as Idebenone and the strongest anti-aging substance. It helps anti-aging and firming your skin. It is 4 times more powerful effects than Vitamin C and 10 times more powerful effects than Coenzyme Q10. It also contains other ingredients such as Allantoin and Hippophae Rhamnoides Fruit Extract to smoothen your skin and nourishing the skin.



10. Stayve Collagen Ampoule

8ml*10 pcs / box

Collagen Ampoule contains Hydrolyzed Collagen as the main ingredient which is ideal for firming the skin and anti-wrinkle. It has high protein content to make your skin firm and build skin film to moisturize the skin by holding the moisture. It also contains other ingredients such as Tocopheryl Acetate and Vitis Vinifera (Grape) Callus Culture Extract which work as antioxidants that are ideal for aging skin and prevent moisture evaporation by balancing skin lipids.



1-1. BB & Booster Ampoule STAYVE KIT

Ideal for beginners or academy students as you can pick and choose a variety of shades



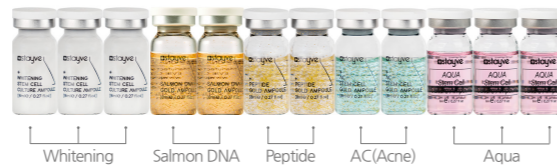
1-2. Pre & Post Treatment STAYVE SKIN CARE PRODUCT FOR PRE-TREATMENT AND POST-TREATMENT



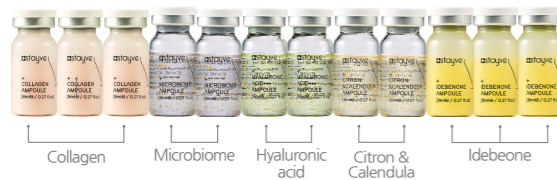
Stayve BB Glow Starter Kit 8ml * 12pcs/box



Stayve Booster Starter Kit 8ml * 12pcs/box



Stayve Booster Starter Kit II 8ml * 12pcs/box



Stayve Customized Kit Preferred Ampoule * 12pcs | 8ml * 12pcs/box



Stayve Customized Kit can be designed with ampoules according to each's preference.

It will be filled with 12 vials of the chosen ampoule that is most suitable for each skin type as a self-made kit.

Stayve Hydrating Rose Toner (Vegan)

Capacity | 290ml

Stayve Hydrating Rose Toner (Vegan) calms your skin stimulated by the outside and moist your skin with rich moisture components. It contains Rosa Damascena Flower Water that can be used for all skin types and provide moisture to the skin to repair the balance. It also firms your skin to help anti-wrinkles, mild and soothing as a multi-effect in the skin.

*EVE Vegan Certified



Stayve Exfoliating Gel

Capacity | 290ml

Use Stayve Exfoliating Gel and Neutralising Foam to remove dead skin cells before a BB glow treatment to greatly enhance treatment results. The Mandelic Acid present in the gel gently removes dead skin in a nonabrasive manner. The Stayve Exfoliating Gel is specifically designed for microneedling.



Stayve Repair Cream For Face And Body(Vegan)

Capacity
1g * 100pcs/ box



Stayve Mild Cleansing Milk (Vegan)

Capacity | 290ml

Stayve Mild Cleansing Milk (Vegan) removes thick makeup easily, providing a comfortable, soft texture on the face without irritating the skin. Containing Prunus Serrulata Flower Extract which includes Vitamin A, B, and E, it helps to moisture and clears the skin. It also contains Laminaria Japonica Extract, great for skin elasticity and anti-aging.

*EVE Vegan Certified



Stayve Neutralising Foam

Capacity | 150ml

The Stayve Neutralising Foam gently neutralizes skin that has become acidic after exfoliating. Massage the face with this fragrant, foamy neutralizer for about three minutes. Balancing the PH level of the skin creates the optimal skin condition for BB glow treatments.



Stayve Repair Cream (Vegan) is designed to heal and revitalize irritated skin after laser treatments including semi-permanent treatment and MTS. It contains vegan ingredients such as Prunus Serrulata Flower Extract and Betula Alba Juice which provides soothing and moisturizing effects on damaged skin. Natural acacia peptide (Hydrolyzed Vegetable Protein) promotes the natural moisturizing factor; NMF which is a necessary factor for active moisture and it helps with the perfect moisturizing function through the powerful double moisture barrier system.

*EVE Vegan Certified

STAYVE TREATMENT INSTRUCTIONS

STEP 01

Cleanse the face thoroughly by using Mild Cleansing Milk.

STEP 02

Lightly apply Rose toner on the face with a cotton pad.

STEP 03

Using a brush, apply a thick layer of the exfoliating gel. The MTS treatment is more effective after exfoliating. It is not recommended to use any other exfoliating gel besides the one include in the MTS treatment.

Dry skin: 2 minutes
Normal skin: 3 minutes
Oily skin: 5 minutes

The exfoliating gel's acidity may cause slight tingling on sensitive skin.

STEP 04

Wash face or wipe with a damp towel or sponge.

STEP 05

Apply the neutralizing foam with a brush. This foam lowers acidity caused by the exfoliating gel. Use hands to gently massage the face for 3 minutes. Wash face or wipe with a damp towel or sponge.

STEP 06

Begin the MTS treatment (2-3 minutes) after applying the booster ampoule. The booster ampoule comes in various types to meet your skin's needs: Acne, Salmon, Peptide Gold, Whitening, Aqua, Citron & Calendula, Hyaluronic acid, Microbiome, Idebenone and Collagen. Regular BB ampoule can be applied instead of the booster, but the booster ampoule is more effective when used before BB Glow treatment.

STEP 07

Begin the MTS treatment (2-3 minutes) after applying the BB Glow ampoule.

STEP 08

Apply a mask pack or modeling pack to reduce irritation. You can also use the Omega Light machine for 10-15 minutes. This step can be skipped if you don't have the machine.

STEP 09

After remove mask pack, spray the Rose Toner and pat the face softly to absorb the remaining BB ampoule into the skin. After finish this step, apply the Stayve Repair Cream.

STEP 10

For aftercare, use Stayve Repair Cream every day after cleansing. We also recommend applying booster ampoules at home to provide nutrients and maximize effectiveness.

<AFTER CARE>

Depending on the skin's condition, refrain from using the sauna or tanning for four to seven days. The skin may get dry after treatment so apply the repair cream to moisturize the skin. When you go out, make sure to use sunscreen.

<LENGTH OF NEEDLES>

1. BOOSTER ONLY

You can use longer needle between 0.2mm ~ 1.0mm for the ampoules that do not contain BB component. Make sure you apply anesthesia cream in case of using longer needle around 1.00mm. Client shouldn't bleeding and do not reach out to blood vessels.



2. BB ONLY

You can skip the Booster stage and do the BB procedure only. In this case, only short needles, middle length of needles or plastic needles are recommended.

3. BOOSTER & BB

If you want to do Booster and BB both, the Booster procedure must be done first before BB. Booster makes your skin condition best. Also if doing the BB and Booster in a session, then it can irritate the skin than the other option, so it is better to use nano or middle length of needles rather than longer needles.

1-3 Cherips

Micro Needling Thrapy System (MTS) Ampoule Set for Lip

The Cherips is a lip version of BB ampoule and not a semi-permanent product. Components of Cherips is 5 of lip colors, Booster for Lips and After Treatment 30ml per pcs



Booster for lips

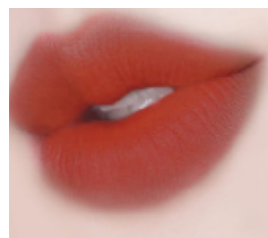
Before do the procedure with Cherips, the Booster helps for smooth lip surface and voluminous lips.



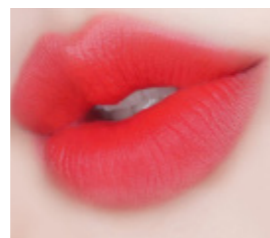
After Treatment

It may be dry after the procedure so moisturized is the most important thing. These ampoules help to keep the moisturizing.

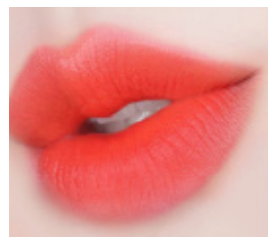
LIP COLORS



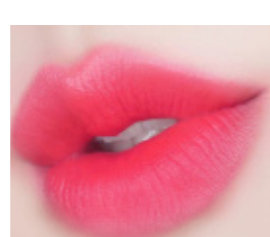
#1 Burgundy



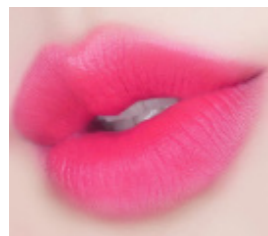
#2 Red



#3 Orange Red



#4 Hot Pink



#5 Pink



CHERIPS TREATMENT INSTRUCTIONS

Step 1

Use a cotton swab to spread Booster evenly.

Step 2

Exfoliate and disinfect chapped lips (Exfoliate from 30 seconds to 1 minute)

Step 3

Remove the remaining with a wet cotton pad.

Step 4

Shake the products for 30 seconds to mix lip ampoule well and put on a pigment cup.

Step 5

Spread the ampoule evenly on lips with a cotton swab.

Step 6

Start the treatment with a machine. This procedure takes about 2~3minutes.

(Optional: If the color is uneven, instead of removing it immediately, reapply the ampoule and repeat the procedure on an uneven spot)

Step 7

Reapply the ampoule evenly and leave for 5 minutes.

Step 8

After treatment, wipe the remaining ampoule on the lips with a wet cotton pad.

Step 9

Apply "After Treatment" to finish.

STAYVE

CHAPTER 2



PERMANENT PIGMENT

2-1. Stayve Organic Pigment

2-2. Color Chart

2-1. Stayve Organic Pigment (29 types)

Stayve Organic Pigments have a wide range of colours, vividness, and excellent tint strength.



8 types of pigments exclusively for **Lips** that are long-lasting with vivid colours in addition to excellent colouration and tint strength.

Eyeliner

Eyebrows



1 type of pigment exclusively for the **Eyeliner** for a clear and vivid eyeliner.



11 types of pigments for **Eyebrows** for various skin colours of all genders and ages.



4 types of **Correction** pigments to adjust a colour's brightness or prevent discolouration.
4 types of **Camouflage** pigments for fine colour correction, wound cover, and nipple cover.



1 type of **Stayve solution** that acts as a booster which adjusts the colour density and increases tint strength.

2-2 Stayve Organic Pigment Color Chart

EYELINER PIGMENTS



Stayve Black
201

EYEBROW PIGMENTS



Woody Black
301



Graphite Brown
302



Chestnut Brown
303



Army Brown
304



Oak Brown
305



Teddy Brown
306



Ginger Bread
307



Latte
308



Honey Mellow
309



Midnight Gray
311



Deep Muddy
312

LIPS PIGMENTS



Red Wine
501



Raspberry
502



Magenta Red
503



Rose Pink
504



Barbie Pink
505



Fiesta
511



Flame Red
512



Carrot Juice
513

CORRECTION PIGMENTS



Olive
601



Taupe
602



Tangerina
603



Stayve White
604

CAMOUFLAGE PIGMENTS



Bubble Gum
611



Areola
612



Beige
613



Camo
614

CORRECTION PIGMENTS



Stayve Solution
701

STAYVE

CHAPTER 3



PEELING

3-1. Stayve Seanergy Peel

3-1 What is Stayve Seanergy Peel?



Powder
1.3g * 5pcs



Solution
8ml * 5pcs

Stayve seanergy peel is a peeling system with micro-particles that removes off dead skin cell on the skin. It makes your skin bright and soft. Stayve seanergy peel comprised of 5 of solution and 5 of powder.

HOW IT WORKS?

It is a treatment that using “spicule (Hydrolyzed sponge)” which is a prickle of coral calcium rich in minerals from deep clean ocean. Peeling works as micro-particles are embedded into the skin dermal layer for 36 to 48 hours. Mix the Stayve Seanergy Peel Powder with the Stayve Seanergy Peel Solution and apply on the skin and rub gently to stimulate skin’s circulation and make the skin texture soft.

INSTRUCTION

- 01** Cleanse your face with Stayve Mild Cleansing Milk. Refine your skin by applying or spraying Stayve Hydrating Rose Toner. After refining your skin, apply anesthetic cream for 30 minutes, leave it for 30 minutes and wipe away clearly before you begin the treatment.
- 02** Mix the Seanergy peel powder and solution well depend on how strong peeling you want.
- 03** Proceed treatment in the order of cheek -> forehead -> nose. Gently rubbing face for 2~3 minutes per area and when rubbing ends gently pressing the face so that spicule can be embedded in to the face. (Apply the mixed solution and lightly press, and this action calls as “Rubbing”.)
- 04** Use a damp sponge or gauze to wipe off any residue from the skin’s surface.
- 05** Place a cold mask pack or modeling pack on the skin for soothing and hydrating irritated skin.

CAUTIONS & AFTER CARE

- 01** Sunscreen must be applied when you go out after getting the treatment. (Freckles or pigmentation might occur when exposed to the sunlight without applying sunscreen.)
- 02** Do not peel off the dead skin cell forcefully and care for the moisturization properly until all the dead skin cells drop naturally.
- 03** Apply plenty amount of ampoule or cream that is helpful for moisturization often, for every 7 ~ 8 hours, until all the dead skin cells drop.
- 04** It is normal your skin is red or feeling itchy or stings after the procedure, and it can be last for 2~3 days but after days, as dead skin cells take off the skin will become normal states.
- 05** Lightly cleanse your face a day after the treatment. Do not use cleansers that contain exfoliating ingredients such as scrub, AHA, BHA, and etc.
- 06** Once powder and solution have left, for the powder sealed with the lid and in case of solution store in the fridge with the lid.



MEDISCO

CHAPTER 1



EYELASH PERM

1-1. Medisco All About Lash

1-1. Medisco All About Lash

Make Your Lash Bloom and Lift

A kit that includes everything to educate and perform brow lamination and lash lift procedures.

Why Medisco All About Lash?

Consisting of 3 steps : Curling, Fixing and Treatment.

Damage-free curling, includes a treatment product that nourishes the eyelashes and eyebrows.

A single kit allows both education and procedure.

One procedure makes a curl last 4-6 weeks.



Contains

- Curling Kit
- Glue (5ml)
- Nourishing Essence (5ml)
- 5 different sizes of eyelash Rods (10 units)
- Perm Stick (1 unit)
- Silicon pad (1 unit)
- Mini Brush (10 units)
- Micro Cotton Swab (20 units)





Instruction

- 1) Remove eye make-up completely.
- 2) Remove oil using lash shampoo or pre-treatment.
- 3) Apply eye patches or tape to cover the bottom lashes completely to prevent them from getting a perm.
- 4) Apply glue to the inner side of the perm rod and stick it on the palpebral.
- 5) Apply a small amount of glue on the perm rod and fix the eyelashes to the rod in an orderly way using the perm stick. The glue hardens quickly, so apply small amounts multiple times while fixing the eyelashes.
- 6) Apply the Step 1 Curling to micro swab. Apply to eyelash at least 2mm apart from the mucous membrane, and fix the eyelashes by covering them with cover wrap.



Weak and
thin eyelashes
10-12 minutes



Average
eyelashes
13 minutes



Thick
eyelashes
14-15 minutes



7) After enough time, wipe away with a cotton swab in the direction of root to tip, as to be careful the eyelashes are not removed from the perm rod. Apply the Fixing (Step 2) in the same fashion. Step 2 is crucial in shaping the eyelashes, therefore it is paramount that you fix the eyelashes to the perm rod before applying the Step 2 Fixing.

* Step 2 Time: Same with Step 1 *

8) After enough time, remove the Step 2 Fixing with cotton swab while paying attention not to remove eyelashes from perm rod. Apply Step 3 Treatment and leave unattended for 5 minutes.

9) After 5 minutes, remove treatment and glue with wet cotton pads and remove rod, together with the tape or eye patch covering the bottom lashes.

10) Organize the eyelashes with mini brush and finish with applying Nourishing Essence.

MEDISCO

CHAPTER 2



Facial Treat

2-1. Medisco TokTok' Pack

2-2. Medisco Peelieve All-In-One Cream

2-3. Medisco Peelieve All-In-One Gua sha

2-4. Medisco Peelieve Cica Cream



2-1. Medisco TokTok' Pack

“TokTok the Popping care for clear skin with Medisco TokTok' pack”

The bubble created when gel and sheet meet it detoxes the skin and presents you clear and smooth skin texture, TokTok's unique patented technology!

Why Medisco TokTok' pack?

Ⓐ Skin whitening and texture improvement

- Provide Oxygen to the skin by Bohr Effect!

Ⓑ Moisturizing care

- Gel with less stimulation and high moisturization!

Ⓒ Slimming and Lifting effect

- Activating lymph area makes your jawline lift and stimulating collagen and elastin in the skin to boost elasticity!

Instruction

- 1) Cleanse your face thoroughly.
- 2) Apply 20ml of TokTok Gel first on the face and neck thickly.
- 3) Apply an exclusive TokTok Mask sheet pack on the neck and face.
- 4) Gently press the face using the entire palm to generate CO₂ until the CO₂ reaction is finished.
- 5) Once the CO₂ reaction is finished, leave the skin for up to 15mins to hydrate the skin without further pressing.
 - Sensitive skin: 10 mins
 - Acne skin: 12 mins
 - Oily skin: 15 mins
- 6) Remove sheet mask pack after 15 mins. At this moment, gently wipe out the residue on the face with a spatula and sponge.
- 7) Finish up with skincare.
- 8) Apply plenty of Stayve Repair Cream or Medisco Cica Cream as the skin can be dry after the treatment.

〈Contains〉

- Medisco TokTok Gel (20ml) x 5ea
- Medisco TokTok Mask (5g) x 5ea





2-3. Medisco Peelieve All-In-One Cream

“Massage cream for glowing texture, supplying nutrition and revitalized skin by high-end esthetic”

Why Medisco Peelieve All-In-One Cream?

Ⓐ Release accumulated waste

- There are a lot of blood vessels, nerves, and muscles distributed in our body; when you massage prior to treatment, you can release accumulated waste between muscles and bones.

Ⓑ Maximize the effectiveness of the procedure

- It also makes the muscles and the fascia flexible, and improves blood circulation, dramatizing the effect of the treatment.

How can I use Medisco Peelieve All-In-One Cream?

- Massage (All-In-One Cream) + Microneedling Therapy System
- Massage (All-In-One Cream) + Stayve Seanergy Peel
- Medisco TokTok + Massage (All-In-One Cream)
- Massage (All-In-One Cream) + Gua Sha



2-4. Medisco Peelieve All-In-One Gua Sha

“A Beauty device that alleviates bloating or puffiness and defines facial contour or facial lines with a tool”





2-4. Medisco Peelieve Cica Cream

“A creamy cream that sticks to the skin perfectly and fills the surface of the skin and inside both”

Why Medisco Peelieve Cica Cream?

- Ⓐ Contains 5180ppm amount of Centella Asiatica
 - Regenerate skin and anti-inflammatory effects!
- Ⓑ Contains Amino Acid component
 - Gives hydrogen bonds with the moisture of the skin to hold the moisture of the skin!
- Ⓒ High content of oil
 - Gives you a healthy and shining skin look!
- Ⓓ Individually packed
 - Light to carry and hygienic!

When do I use Medisco Cica Cream?

- After Medisco TokTok Pack
- After Stayve Seanergy Peel
- After Stayve Booster treatment
- After all types of treatment!

Contains : 2ml x 30pcs/ box



Instruction

At the last step of skin care or treatment, when skin gets dry take an appropriate amount and gently absorb to the skin frequently as it wears protective on the skin.

*Once you open the patches, use it within 3days after sealing perfectly.

MISSMITO

CHAPTER 1



MACHINERY

1-1. MISSMITO

1-2. Needle

1-1. MISSMITO MACHINE

Component:

1 of Hand-piece | 1 of Adapter | 3 pieces of MTS needles

There are 2 kinds of Missmito, wired and wireless.
The Missmito Machine is used for BB Glow treatments and micro-pigmentation.
The curved design and lightweight of the machine provide a perfect grip feeling.
The needle length can be adjusted from 0.5mm to 0.8mm by twisting the machine.

Wireless Missmito machine's max speed is at level 8 and wired Missmito's max speed is at level 9.



Advantages of Wireless Missmito

- Handy and comfortable free from wire.
- No limitation at place



Advantages of Wired Missmito

- More powerful than the wireless machine (since it directly outputs the electricity)
- No need to charge the machine

Cautions in use

- It is not recommended to use over with a voltage higher than 220V (Recommended to use adaptor in case of using 110V)

1-2. MISSMITO MTS NEEDLE

Component:

15 pieces of plastic needle 0.5mm length

For the Missmito MTS needle, the number of needle projections is 37, and the length of needle is from 0.5mm to 0.8mm as it can be adjusted by twisting Missmito machine. It is ideal for people who are allergic to iron as it gives the same effect as a metal needle.



OTHER TYPES OF MISSMITO NEEDLE



1 Prong Micro / 1 Prong :

These needles have only one needle

1 Micro: Suitable for delicate procedures

1 Prong: Suitable for eyeliner semi-permanent makeup treatment



2 Prong Flat / 4 Prong Flat :

These needles are used on lip semi-permanent makeup

2 Prong Flat: Suitable for the delicate procedure

4 Prong Flat: Suitable for a spacious area



3 Prong Round / 5 Prong Round :

These needles are used on eyebrows semi-permanent makeup

3 Prong Round: This forms a triangular shape

5 Prong Round: This forms a circle shape and used on a spacious area



5 Prong Slope :

This needle is used on eyebrow embiroy methods with a machine

5 Prong Slope: This forms a sloped shape